

Exceptional Quality
And International Standard

SHEET METAL FORMING MACHINES

SMFM

HINDUSTAN
HYDRAULICS

Welcome to the world of
Sheet Metal Forming Machines by Hindustan Hydraulics
& Give your business an accession in productivity & competitiveness



At Hindustan Hydraulics everything starts with passion to create practical solutions. Our obsession for innovative thinking, passion for precise technology and modern approach towards manufacturing has led to the permanent and uncompromising quest to create the most uniquely designed international standard sheet metal forming machines.

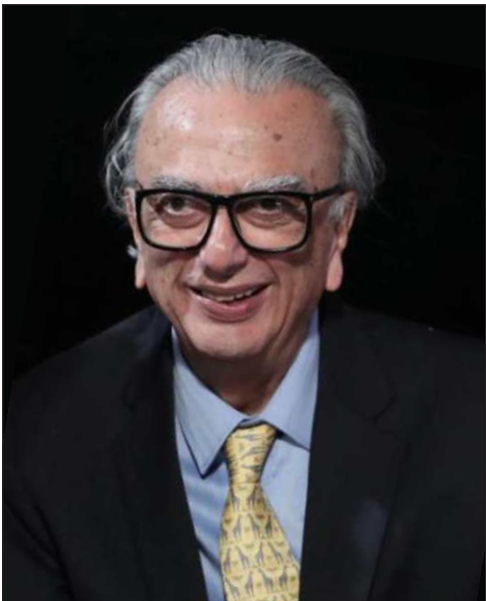
4-5	Company Profile
6-7	Plant View
8-9	Vision, Mission Statement And Credo
10-11	Company Milestones
12-23	Manufacturing Excellence
24-27	Sales, Service & Achievements
30-33	PEREGRINE SERIES (Upgrade of Hybrid Press Brake)
34-39	FALCON & GRIFFON SERIES (CNC Hydraulic Press Brake)
40-41	SWIFT & HAWK SERIES (CNC Hydraulic Press Brake)
42-43	HARRIER SERIES (CNC/NC Hydraulic Shearing Machine)
44-45	Optional Accessories & Spare - Service Network
46-47	Corporate Social Responsibility

■ Hindustan Hydraulics (HHPL) was incorporated in 1965 by our CMD-M.M.S Khosla, with the mission to cater to the growing Indian industrial sector's requirement for Sheet Metal forming Solutions, matching the best in the international markets. The portfolio included hydraulic presses of different sizes and application such as forming presses, deep draw presses, forging presses, scrap bailing presses etc. There were numerous international collaborations with world leaders like TOS, Czechoslovakia for presses and HOESCH MFD Germany, for re-railing equipment for Indian Railways.

Through one of the toughest socio-economic conditions, HHPL grew to be recognised in the domestic and international manufacturing industry as a dependable manufacturer of hydraulic presses. In 1989 HHPL technically collaborated with M/s Darley b.v Holland to manufacture the latest CNC Hydraulic Press Brakes and NC Hydraulic Shearing Machines. In the 90's with the opening up of the Indian economy, we faced enormous competition from established domestic and international giants in the field. But due to constant innovations, superior servicing, high quality and a committed team, HHPL survived and grew to capture large percentage of the market share.

Growth continues at a steady pace. We have grown into a 14000 sq. mtr. state of the art manufacturing unit, employing qualified personal right from design, manufacturing, quality control, sales & servicing departments.

In the domestic market, we are considered as the preferred vendor by the top engineering companies, in the private as well as public sector, with more than 7000 installations.



MMS Khosla
1940-2021

discover the world of
Hindustan Hydraulics@





■ Hindustan Hydraulics's factory covers an area of 14000 square meters, consisting of production line for 1000 machines in assy. shop, CNC shop, boring shop, shot blasting, fabrication and painting shop, R&D building, spare parts division warehouse and office building. The factory is also equipped with advance testing and product research capabilities.

We possess ISO-9001-2015 and Integrity Management System; having cleared all necessary factory act requirements.

Company Philosophy



Vision
mission statement
credo & strength

Vision

We wish to be become a leader of sheet metal forming solutions and stay ahead in our goal of contribution towards environment and society.

Mission Statement

To manufacture and supply innovative quality products and services to achieve customer delight.

To engage all our business associates, customers and employees toward company's progress; so that all around prosperity, mutual respect and pride is achieved.

To commit ourselves to human dignity, welfare of all associates, safety, health of our employees and environment protection.

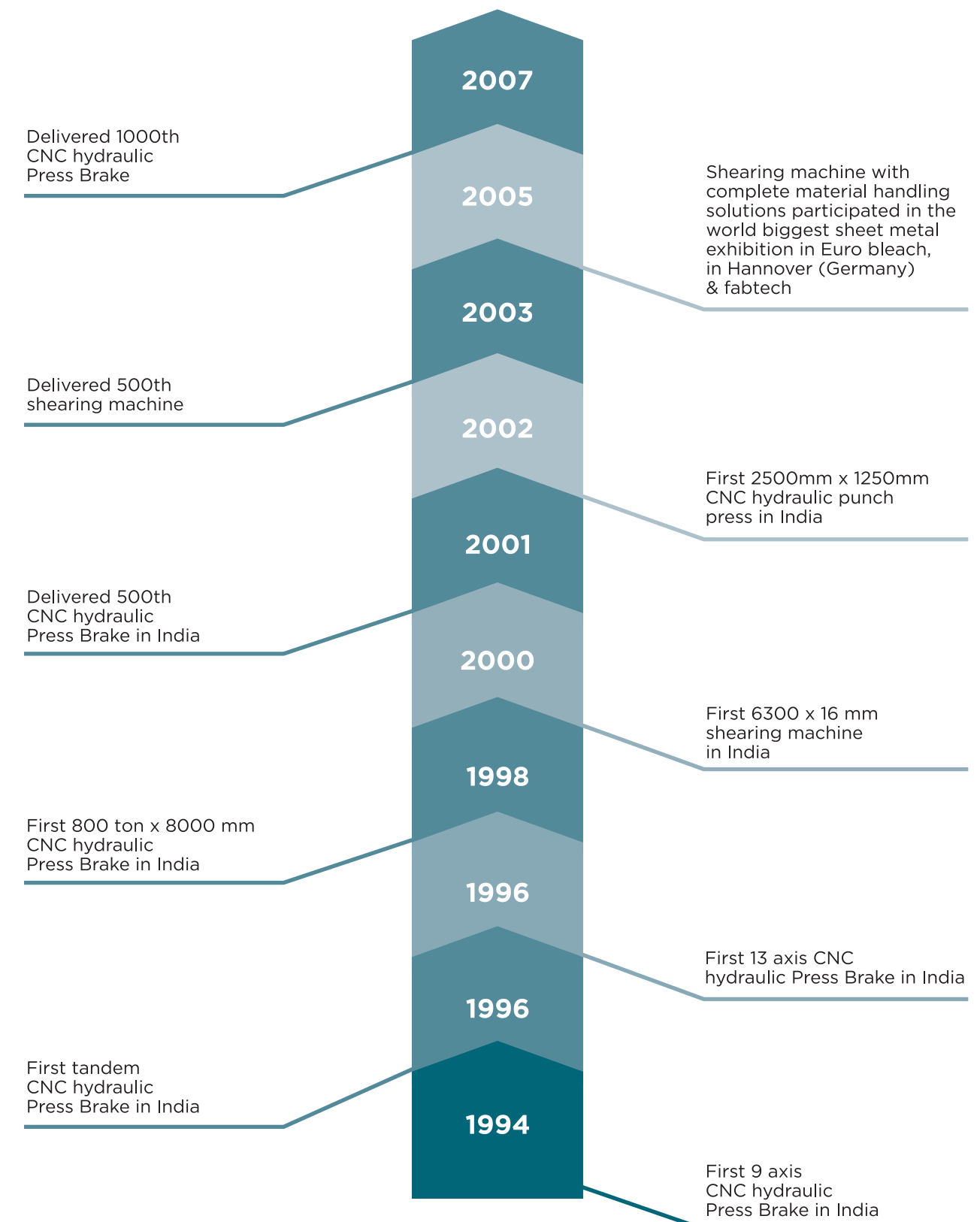
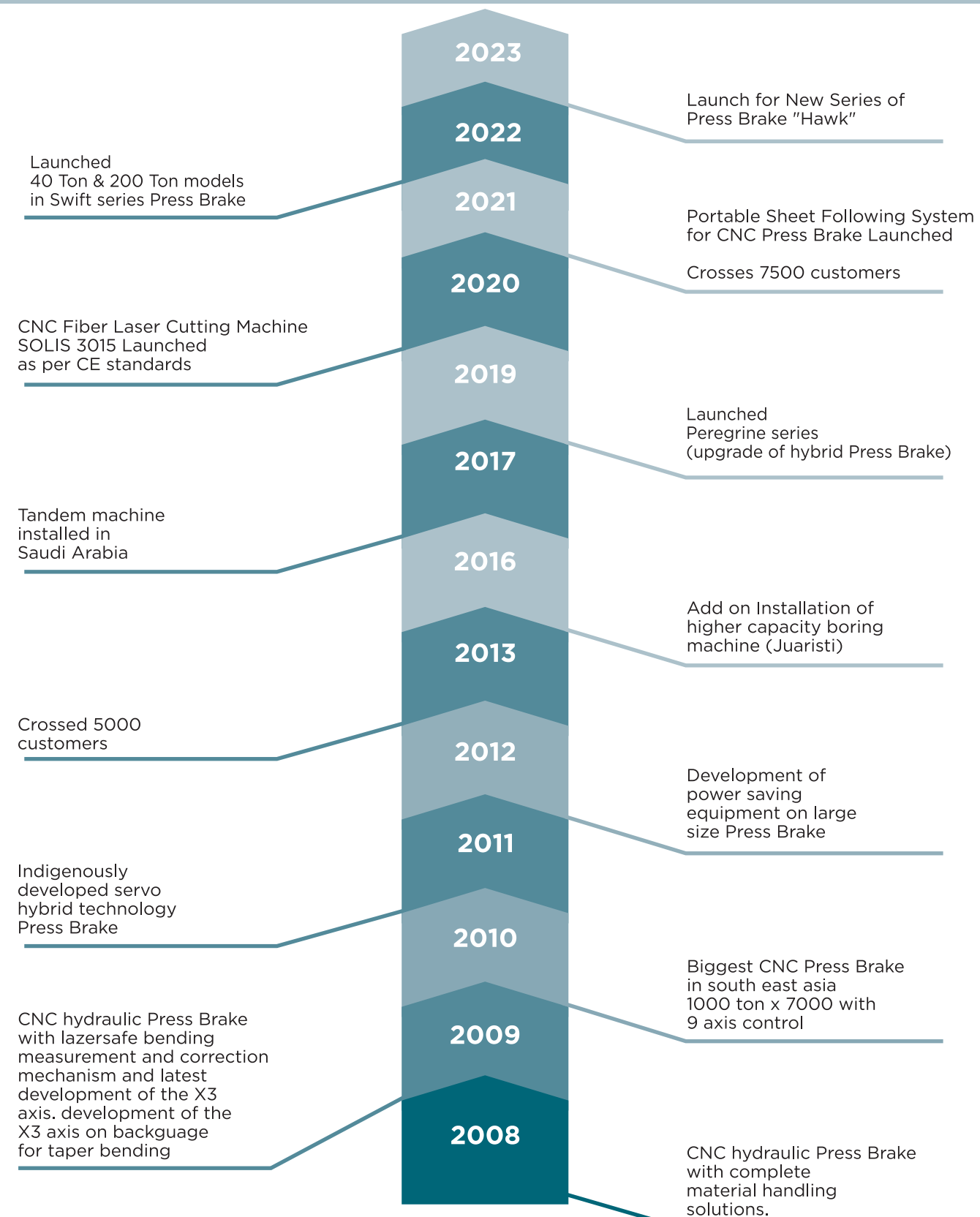
Our Strength



Credo



WE ARE THE LARGEST MANUFACTURERS OF CNC HYDRAULIC PRESS BRAKE & NC/CNC HYDRAULIC SHEARING MACHINES IN SOUTH-EAST ASIA



Manufacturing Excellence



Perfection is not attainable.
but if we chase perfection, we can
catch excellence.

- To achieve manufacturing excellence, we begin by procuring high quality steel plates of desired sizes. After proper inspection of these plates, we process the plates with oxi-fuel laser cutting machines thus ensuring the best possible results.

All the steel components are shot blasted in shot blasting machines to make these steel sheets free of any rust & scaling and ready for first primer coating.

We use Mig welding and Arc welding machines for the welding process.

To enhance the dimensional stability and mechanical integrity of welded components and heavy structures, stress relieving is done with vibratory stress and relieving method.



Boring Shop



Single Setup Moving Column
Horizontal & Vertical CNC Milling Machine

Worlds best floor boring machine for milling and drilling,
capable of handling upto 9 meter frames in single set-up.



Single Setup Moving Column
Horizontal & Vertical CNC Milling Machine

Juaristi floor boring machine is the best machine for milling and drilling, capable of handling upto 9 meters frames in single set-up with spindle rotation at 360° and automatic tool changer (ATC)



CNC Machine Shop

At hindustan hydraulics we believe that world with technology is full of possibilities. Hindustan hydraulics CNC machine shop is fully equipped and very large, one-stop solution for computerized machine cut tools and components. all our components are manufactured & assembled in-house.

Besides that, we have complete record of all hydraulic machines sold to our customers for ensuring full backup support during spare part requirements. We have latest CNC turning center, CNC machining center (3-4-5 Axes), CNC horizontal machining center, vertical line CNC machines.

Our commitment is to use advance technology to manufacture our components to ensure supreme quality of our final products.





Final Assembly Area

Production control system was established based on many years of continuous improvements, full automation with a human touch to achieve great quality. Craftsmanship at our factory was achieved by learning manufacturing through years of manual work, then passing it on others. Step wise approach towards machine building is done to fully satisfy customer requirements.

Going forward, we will maintain our steadfast dedication to constantly developing better machines which can deliver long term benefits to our esteemed customers.

In order to produce our standard & custom built machines, we practice in process & stage inspection quality control system for zero defect manufacturing.

Information to produce machine is quickly sent to PPC as soon as possible, machine is efficiently built within the shortest possible time by adhering to the following :-

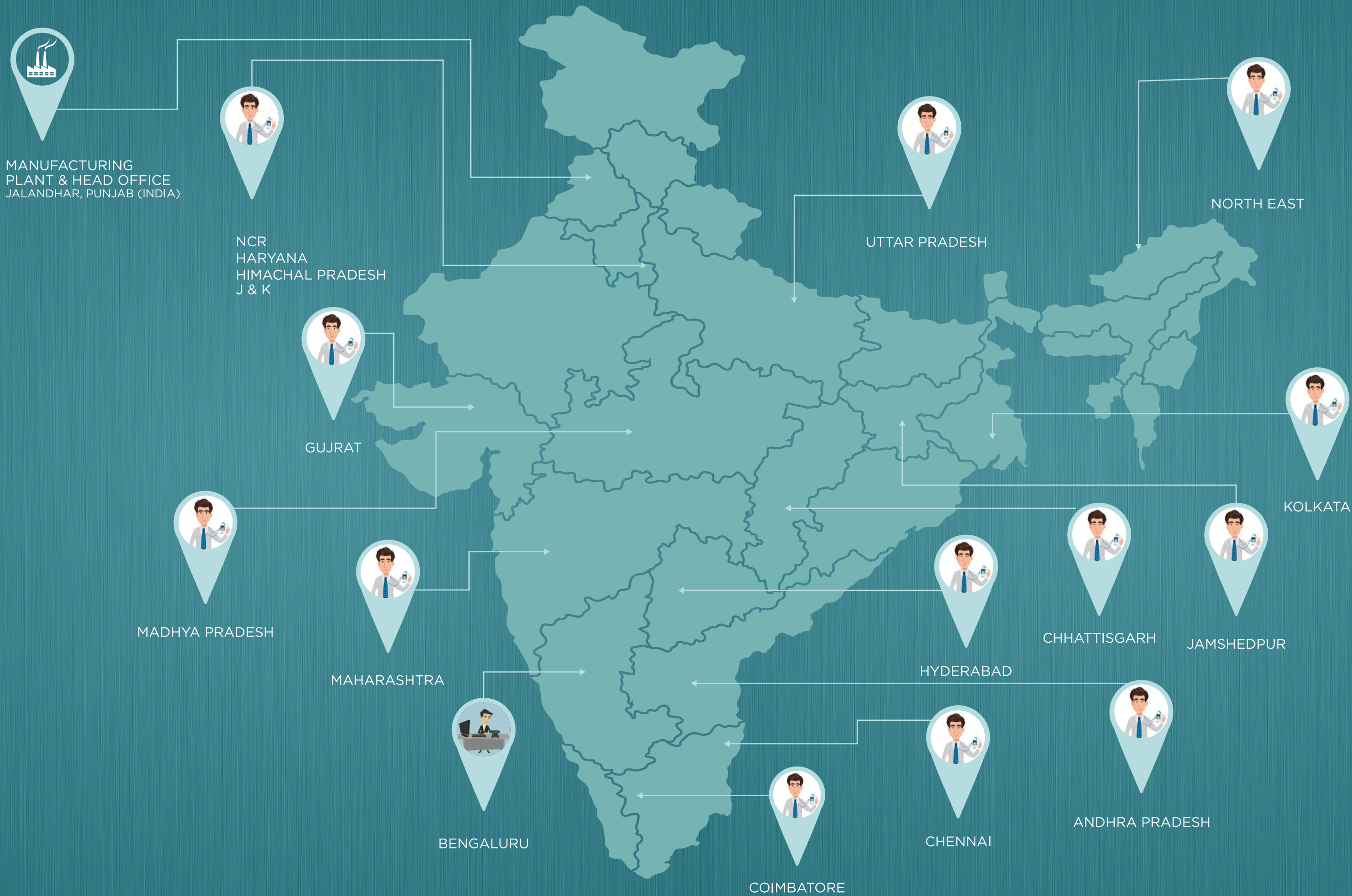
- We produce 80% of machine components of standard as well as customer built machines in advance.
- We are rightly stocked of all the necessary components required to manufacture all type of machines.
- Assembly line is quickly fed by our strong team of stores department and PPC team.
- Same parts are then again stocked by quick purchases and in house production team.



Final Assembly Area



Final Assembly Area



HINDUSTAN HYDRAULICS CROSSES

7500 CUSTOMERS

ACROSS THE FOLLOWING SECTORS



Agricultural Implements



Construction Machinery



Heavy Fabrication



Enclosures & Electrical Panels



Commercial Automotives



Luxury Coaches



Freight Wagons & Coaches



Defence



High Mast Polygonal Poles



PBE Solutions & Structures



Steel Door Frame, Almirah,
Clean Room & Elevators



Other Applications



Product Range

PEREGRINE Hybrid Press Brakes

FALCON Series CNC Hydraulic Press Brakes

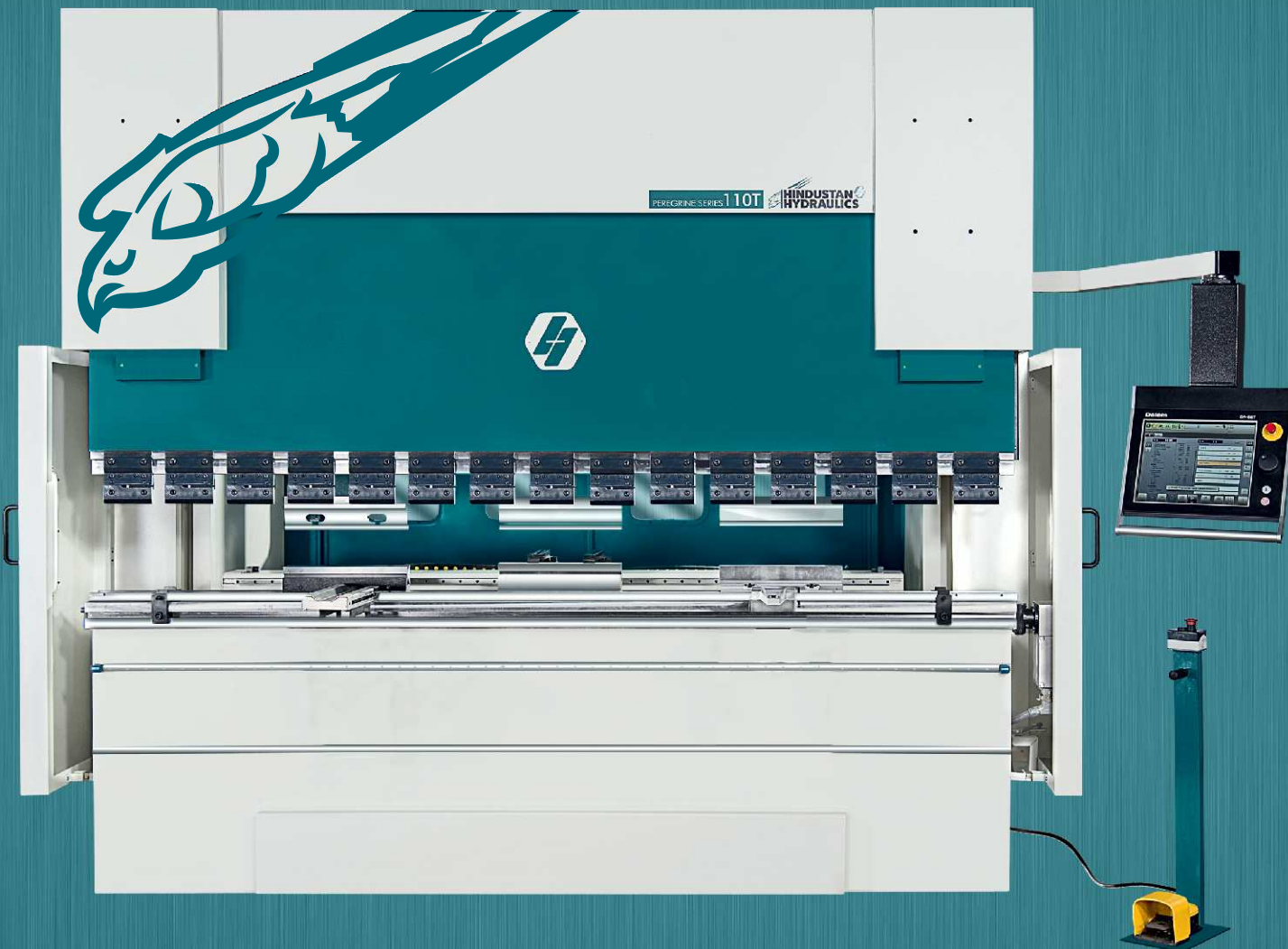
GRIFFON Series CNC Hydraulic Press Brakes

HAWK Series CNC Hydraulic Press Brakes

SWIFT Series CNC Hydraulic Press Brakes

HARRIER Series CNC/NC Hydraulic Shearing Machines

SOLIS CNC Fiber Laser Cutting Machine

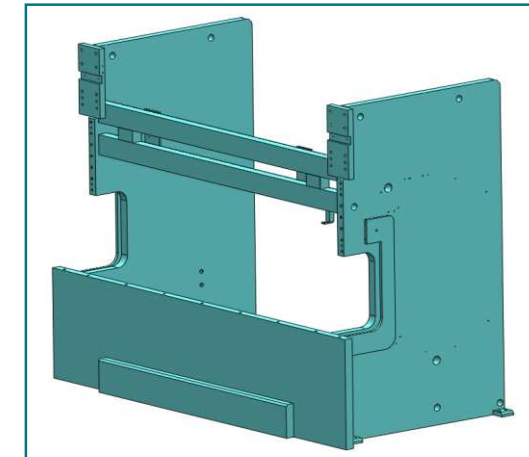


HYBRID PRESS BRAKES WITH EXCEPTIONAL SPEED & ACCURACY

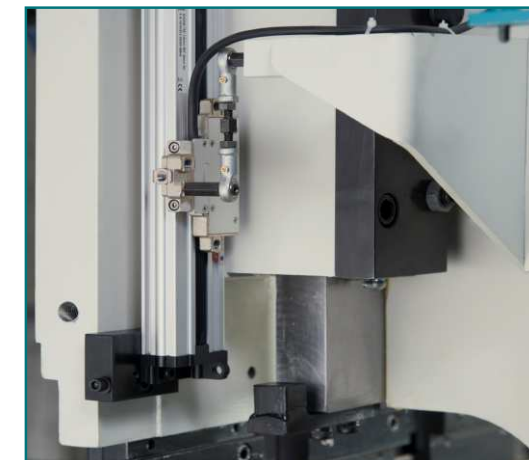


KEY FEATURES

- DHD with real time control of approach speed
- Completely closed loop system
- Fully controlled approach speed thru pump by CNC controller
- Full decompression control for precise spring back calculation
- Speed, position and force controlled thru servo pump
- High position of ram achieved without the use of Proportional valve
- High Bending Accuracy $\pm 0.5^\circ / 1\text{meter}$
- Very fast approach bending and return 250-20-250 mm/s
- Very fast cycle times. 75% faster
- Environment friendly green machine
- 70% lower energy consumption
- 65 % smaller tank size
- Low oil heating for long system life
- Quiet bending operation
- Maintenance free



Rigid Structure



Linear Scale



Side Guard For Safety



Manual Lever Type Quick Clamp

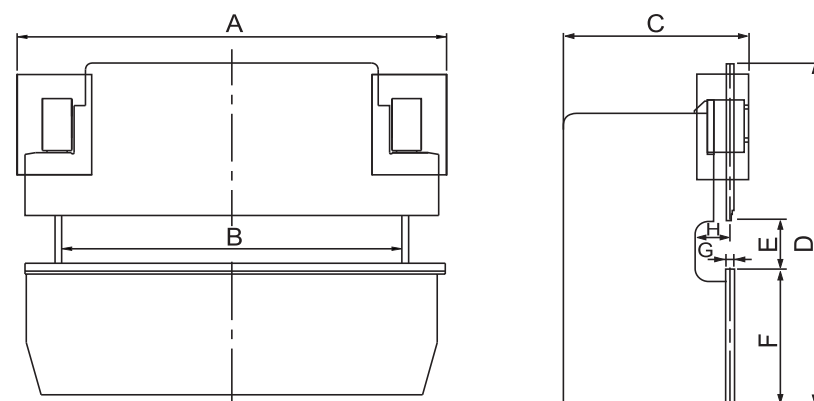


Hybrid Power Pack

Technical Specifications

Type	Capacity (KN)	Working Length (mm)	Daylight (mm)	Stroke (mm)	Throat (mm)	Approach Speed (mm/sec)	Pressing Speed (mm/sec)	Return Speed (mm/sec)	X Axis Speed (mm/sec)
PG-25	250	1250	375	150	200	250	20	250	250
PG-110	1100	3100	475	250	400	250	18	250	450
PG-150	1500	3100	475	250	400	250	15	250	450
PG-200	2000	3100	525	275	450	180	15	180	450

Specifications may change due to technical alterations / upgradations



- The backgauge is built on a heavy duty mechanical structure fixed on the side frames of the press brake. The standard configuration is servo-controlled X AXIS with two manually adjusted fingers moving on double linear guides.

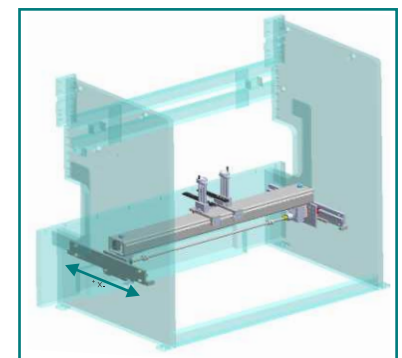
As an option we can offer 2 AXIS (X-R), 3 AXIS (X,R,Z), 4 AXIS (X, R, Z1, Z2) and 6 AXIS (X1, X2, R1, R2, Z1, Z2).

Movement is accomplished by high precision rack and pinions sliding on linear guides, powered by servo motors for all axis. This system ensures high precision with very low noise and maintenance. Low backlash in the system lets us achieve very high position for small increments.

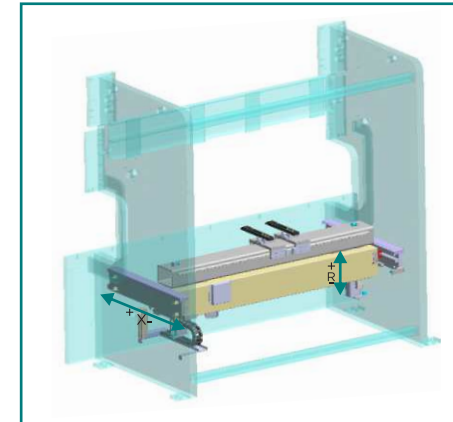


Backgauge movement on LM Guide and hardened rack on pinion

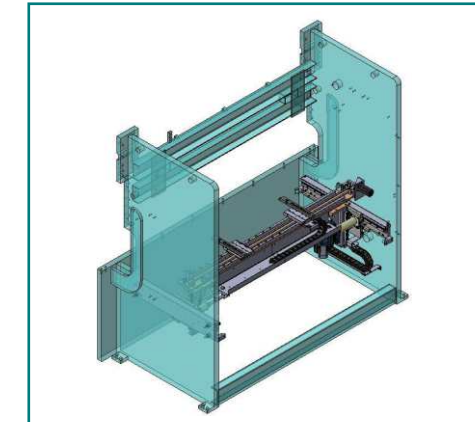
BACKGAUGE	X1	R1	Z1	X2	R2	Z2
1 AXIS	✓					
2 AXIS	✓	✓				
3 AXIS	✓	✓	✓			
4 AXIS	✓	✓	✓			✓
6 AXIS	✓	✓	✓	✓	✓	✓



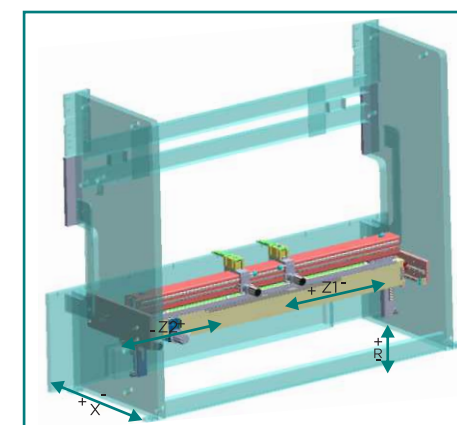
1 - AXIS (X)



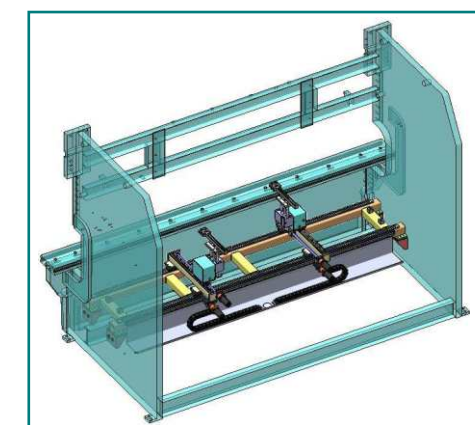
2 - AXIS (X & R)



3 - AXIS (X, R & Z)



4 - AXIS (X, R, Z1 & Z2)



6 - AXIS (X1, X2, R1, R2, Z1 & Z2)



CNC HYDRAULIC PRESS BRAKE

KEY FEATURES

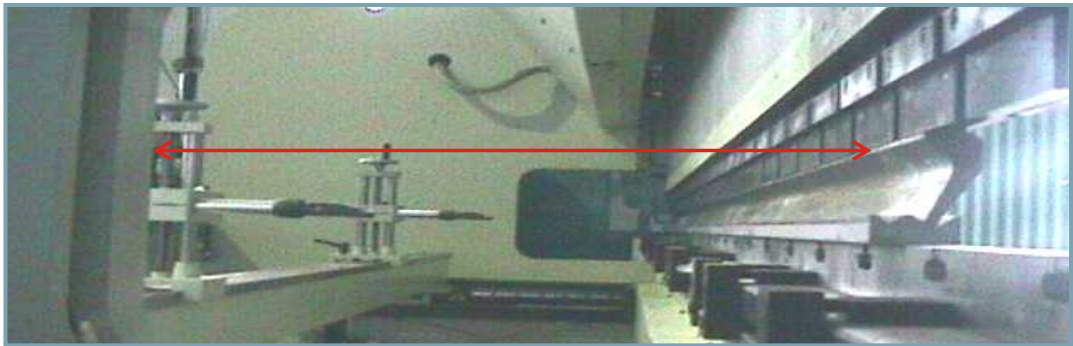
- FALCON & GRIFFON series machines combine proven and reliable repeatability and ease of use with performance and versatility of CNC hydraulic press brakes to deliver maximum productivity and accuracy.
- Rigidly welded & stress relieved steel frame is designed for minimum deflection under full load conditions.
- Design of the "FALCON & GRIFFON" series machines is based on S.B.R (Synchronized Bed Reference) principle with Y1-Y2 control for perfect parallelism between both the sides of press beam.
- Down stroking press beam is provided with two high resolution linear glass scales for feedback to maintain stroke depth adjustment up to 0.01 mm.
- Cylinders from high quality forged steel are precisely honed. Pistons are hard chromed for longer life.
- Machining of frames is done in single set-up on highly accurate CNC floor borers.
- The machines are designed to adapt both European and Promecam style tooling.
- Use of the pressure proportional technology enables that the machine operates with calculated force as per the parameters fed, hence saving power and reduced wear & tear over long use.
- FALCON & GRIFFON "series" machines are with beam inclination possibility to ensure accurate bending results for material with variation due to rolling and hardness tolerances.
- FALCON & GRIFFON series machines offer features such as Direct Angle Programming, Angle correction, Dwell time, Mute point, Pressure control, UPD control, Decompression distance & Speed, Backgauge settings and retraction Speed controls to enable ease of operation and flexibility to bend accurately.
- Parallelity & perpendicularity between the upper beam and lower table is in tight tolerances to ensure accurate bending results.
- Various backgauge, controller & crowning options are available.
- Electrical & Hydraulic safeties are as per standard industrial norms.
- High quality working surfaces are achieved with precise and accurate single set up machining on CNC milling machines. These surface finishes are key to the bending results over different load conditions.
- Each machine member is designed for minimum deflection under constant and full load applications even over long periods. Further each fabricated part is shot blasted and all frames are stress relieved to distortion free performance.
- Complete tooled up bending solutions with different backgauge configurations, crowning options and material handling options including robotics is to choose from to achieve desired results at par with the best in world.



Fully Customized Tandem Machine



Longer Daylight

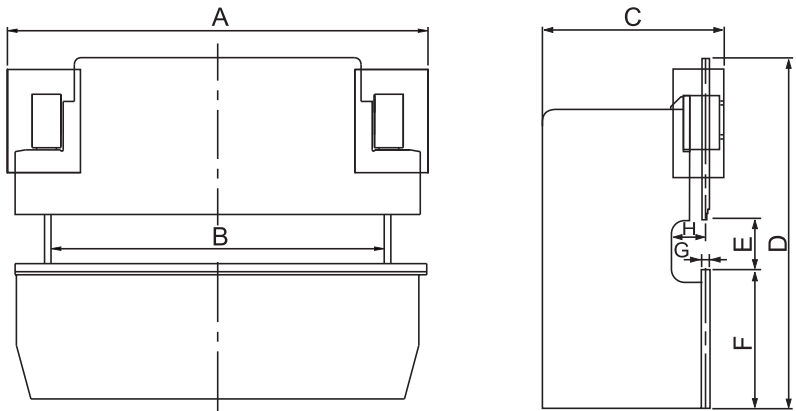


Larger Throat

FALCON																	
Type FALCON	Capacity KN	Power KW	Number of Cylinders	Stroke length Adjustment Mm/sec	Lowering Speed mm/Sec.	Pressing Speed mm/Sec.	Return Speed mm/Sec.	Max Working Length mm	Dimension in mm.(Propose Reduction)								
									A	B	C	D	E	F	G	H	I
110-31	1100	7.5	2	250	100	7.5	60	3100	3400	2550	1700	2700	475	911	170	400	
110-43	1100	7.5	2	250	100	7.5	60	4300	4500	3700	1000	3000	475	911	170	400	
110-52	1100	7.5	2	150	100	7.5	60	5200	5320	4300	1500	2950	375	900	170	250	850
150-31	1500	11	2	250	100	7.5	70	3100	3400	2550	1750	2780	475	950	170	400	
150-43	1500	11	2	250	100	7.5	70	4300	4570	3700	1750	3120	475	950	170	400	
150-52	1500	11	2	175	100	7.5	70	5200	5320	4300	1500	2850	400	900	170	300	
200-31	2000	15	2	275	70	7	75	3100	3700	2550	2120	3250	525	1000	250	450	
200-43	2000	15	2	275	70	7	75	4300	4600	3700	2150	3250	525	1000	300	450	
200-52	2000	15	2	225	70	7	75	5200	5320	4300	1800	3350	475	900	250	500	700

GRIFFON																	
Type GRIFFON	Capacity KN	Power KW	Number of Cylinders	Stroke length Adjustment Mm/sec	Lowering Speed mm/Sec.	Pressing Speed mm/Sec.	Return Speed mm/Sec.	Max Working Length mm	Dimension in mm.(Propose Reduction)								
									A	B	C	D	E	F	G	H	I
260-31	2600	18.5	2	300	70	8	80	3100	3600	2550	2200	3380	550	1100	250	500	
260-43	2600	18.5	2	300	70	8	80	4300	4850	3700	2250	3380	550	1100	300	500	
260-52	2600	18.5	2	250	70	8	80	5200	5500	4300	2400	3700	500	900	250	300	1060
340-31	3400	30	2	300	60	8	50	3100	3600	2550	2600	3580	550	1200	300	550	
340-43	3400	30	2	300	60	8	50	4300	4850	3700	2600	3800	550	1200	300	550	
340-52	3400	30	2	300	60	8	50	5200	5500	4300	2400	3700	550	900	300	550	1700
340-62	3400	30	2	300	50	8	50	6200	6450	5100	2400	3900	550	900	300	550	1470
450-31	4500	30	2	350	50	7	50	3100	3660	2550	3250	3800	600	1200	300	600	
450-43	4500	30	2	350	50	7	50	4300	4800	3700	3250	3850	600	1200	300	600	
450-52	4500	30	2	350	50	7	50	5200	5320	4300	2500	3800	600	900	300	600	1350
450-62	4500	30	2	350	50	7	50	6200	6320	5100	2750	3900	600	900	300	600	1500
650-52	6500	37	2	325	50	6	40	5200	5320	4300	2950	3730	625	900	400	400	1415
650-62	6500	37	2	325	50	6	40	6200	6320	5100	3100	4125	625	900	400	400	1810
650-72	6500	37	2	325	50	6	40	7200	7250	6100	3400	4500	625	900	400	400	2050
800-52	8000	45	2	325	50	5.5	40	5200	5320	4300	3100	3740	625	900	400	400	1600
800-62	8000	45	2	325	50	5.5	40	6200	6320	5100	3250	4300	625	900	400	400	2100
800-72	8000	45	2	325	50	5.5	40	7200	7250	6100	3600	4650	625	900	400	400	2250
1000-52	10000	55	2	325	50	6	40	5200	5320	4300	3200	4200	625	900	400	400	1800
1000-62	10000	55	2	325	50	6	40	6200	6320	5100	3650	4500	625	900	400	400	2250

Specifications may change due to technical alterations / upgradations



DA-53T (Standard)

- Colour high brightness LCD display
- 10.1" wide screen TFT
- LED backlight
- 1024 x 600 pixels
- Industrial grade touch screen
- Storage capacity 1 GB
- Data backup / restore via USB
- USB flash memory stick
- Integrated valve amplifier
- Power-down memorisation
- Profile-53TL offline software



DA-58T (Optional)

- Colour high brightness LCD display
- 15" TFT
- LED backlight
- 1024 x 768 pixels
- Industrial grade touch screen
- Storage capacity 1 GB
- USB flash memory drive
- Data backup / restore via USB
- Integrated valve amplifier
- Power-down memorisation
- Profile-58TL offline software



DA-66T (Optional)

- Colour LCD display
- 17" TFT, high brightness
- 1280 x 1024 pixels, 32 bit colour
- Full touch screen control (IR-touch)
- Storage capacity 1 GB
- 3D graphics acceleration
- Standard Windows®
- Networking
- Emergency switch
- Integrated OEM-panel
- USB flash memory drive
- Profile-TL offline software



DA-69T (Optional)

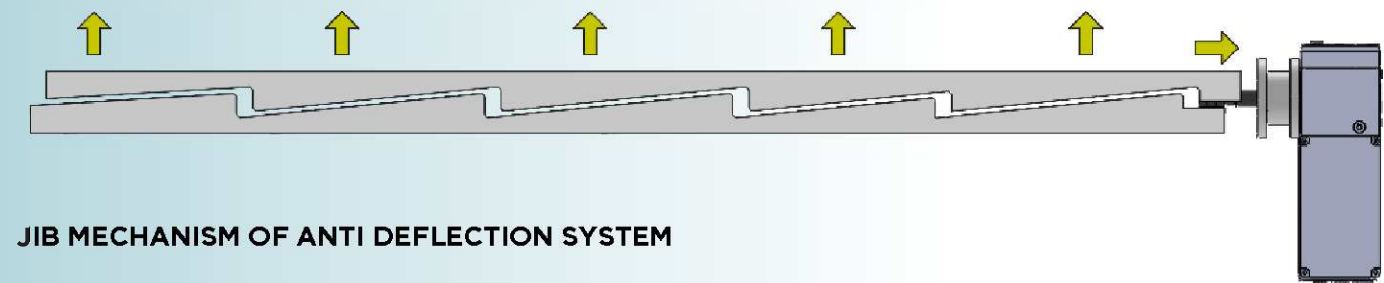
- Colour LCD display
- 17" TFT, high brightness
- 1280 x 1024 pixels, 32 bit colour
- Full touch screen control (IR-touch)
- Storage capacity 2 GB
- 3D graphics acceleration
- Standard Windows®
- Networking
- Emergency switch
- Integrated OEM-panel
- USB flash memory drive
- Profile-T3D offline software



PEREGRINE, FALCON & GRIFFON SERIES

CNC ANTI DEFLECTION SYSTEM

- To achieve very fine and accurate bending values over the entire long lengths, ADS-Anti deflection system is incorporated in lower bed itself to avoid any loss of daylight.
- The principle is based on movement of two special profile wedges, which moves over each other to generate height in the centre of the bending lengths. Spring back of hard material, wear tear of tools in the centre and deflection in the frame under full load applications affect the desired bending accuracies over the long length.



JIB MECHANISM OF ANTI DEFLECTION SYSTEM

Standard Scope Of Supply

- CNC Hydraulic Press Brake is with following basic scope :-
- Press Beam (Y1 -Y2 control)
- Delem's DA 53 T CNC coloured controller
- CNC AC servo driven Backgauge
- - X axis range 0-550 mm with R & Z manual
- - Two flip type backgauge fingers
- Manual Punch & die clamping
- Two nos. front support arms
- Side & rear safety guards
- Table with T slots at rear and front side
- Foot pedal control with emergency switch
- Electrical, mechanical & Hydraulic safeties as per standard norms
- One set of operational & maintenance manual



CNC X-R AXIS

Offline Software Packages

The Profile T software facilitates offline programming and simulation the bending process. The profile T software offers advances programming option in 2D/3D in line with the DA touch controller software. Programming the product graphically shows the true scale representation of the intended product. Realistic product visualization gives feedback on the feasibility, collisions, required tools and tool adaptors for production. Production time calculations, 3D finger view, print function and product sharing over the windows networking with the CNC press brake and standard features on the software package.



SWIFT CNC HYDRAULIC PRESS BRAKE

Standard Scope of Supply

- CNC graphical control unit-ESA S 630 Italian make
- AC servo Backgauge X axis Range 0-550 mm
- Dual ball screw drive
- Manual Anti Deflection System
- Accuracy and repeatability ± 0.1 mm
- Upper punch adaptor with quick clamping & wedge adjustment
- 2 nos adjustable front support arms
- Side & rear guard for safety compliance
- Foot pedal with emergency switch
- Basic machine is complete with all electrical & hydraulic safeties
- Cybelec 8 PS controller also available

Features of CNC Controller 'ESA' OR CYBELEC



ESA S 630

- Graphical 10" Touch Screen display (1024 x 600 pixels resolutions)
- Interactive 2D graphic editor for work-pieces & tools data entry
- 2D graphical of machine frame, work-piece & tools
- 2 Serial ports RS 232
- 1 VGA port for external monitor connection
- 128 MB silicon disk, 2 USB (2.0) ports
- Programming of all axis position, angle programming, backgauge and bending tonnage

Manual Anti Deflection System

Machine can be equipped with manual crowning device with hand crank and read out positioned on control side of the bed. The ADS works on special profile wedges will take care of deflection of machine, tooling wear and tear and spring back of the material to achieve accurate bending results over the entire bending length.

CNC X Axis Backgauge

CNC X axis backgauge is driven on dual ball screw though AC servo drive. The backgauge ensures a positioning accuracy of ± 0.1 mm with 100 % repeatability. R & Z axis are manually adjustable as per the requirements. Backgauge values are programmable through the CNC controller with retraction feature. The flip type designed backgauge fingers reduces the friction between the material and fingers during the bending operation

Optional Accessories

- CNC Anti Deflection System
- Additional Backgauge pedestals
- Tooling
- Cybelec 12 PS Controller

KEY FEATURES

- Machine is designed with down stroke press beam working.
- Rigidly welded steel frame ensuring minimum deflection under load.
- Full electronic synchronization with advanced proportional valve technology to ensure continuous monitoring and correction of the press beam and precise control of the parallelism through CNC system.
- Press beam parallelism and positioning is monitored through two high resolution linear glass scales.
- Very accurate and precise stroke depth adjustment to accuracy of ± 0.01 mm.
- Y1-Y2 beam tilting provision of upper press beam upto ± 10 mm.
- Off-centre bending facility on machine without any damage to the guiding system.
- Operator friendly features like direct angle programming, angle correction, automatic tonnage calculations, speed controls, stroke length adjustment, dwell/hold time adjustment, decompression distance and decompressions speed, programmable backgauge with retraction ensures flexibility and very low set up and time.
- Graphical programming, graphical bend sequence and blank length computation ensures ease of operation.
- Single set machining of the frame structures guarantees in very accurate parallelism along the length of the machine between the lower table and upper press beam.
- Adaptability to modular tooling system and application friendly 60mm table.
- Safety regulations as per the norms.

Technical Specifications

SWIFT										Dimension in mm							
Type	Capacity (KN)	Power (KW)	Number of Cylinder	Stroke length Adj.(mm/sec)	Lowering Speed (mm/sec)	Pressing Speed (mm/sec)	Return Speed (mm/sec)	Max Working Length (mm/sec)		A	B	C	D	E	F	G	H
40-16	400	5.5	2	150	80	8	80	1670		1920	1250	1250	2170	375	803	60	200
80-25	800	7.5	2	150	100	10	62	2500		2800	2050	1300	2400	375	992	60	250
100-31	1000	7.5	2	150	100	8	60	3100		3220	2550	1400	2650	375	1040	60	250
150-31	1500	11	2	175	100	7.5	70	3100		3400	2550	1600	2850	400	1040	60	300
200-31	2000	15	2	225	70	7	50	3100		3600	2550	1750	2900	475	1000	250	300



HAWK CNC HYDRAULIC PRESS BRAKE

Standard Scope of Supply

- CNC synchro Y1-Y2 control
- Delem DA-53 T Controller
- CNC X Axis backgauge
- CNC Anti-Deflections systems
- Two flip type specially designed backgauge fingers
- Quick release punch clamps
- Two front support arms on LM Guide
- Side & rear safety doors
- Foot pedal with emergency switch
- Safety as per International standard norm
- One set of operational and maintenance manual
- VFD motor drive

Features

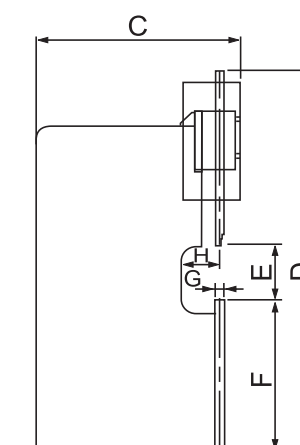
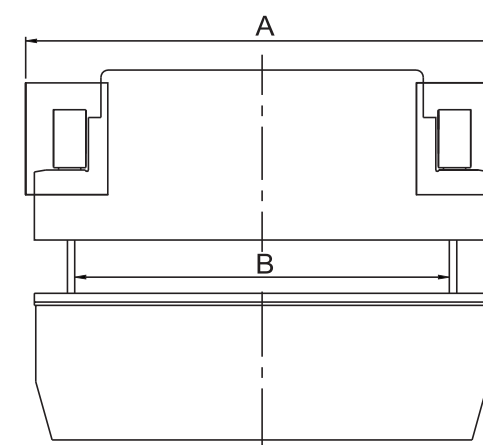
- **HIGH SPEED** Boost your productivity with our high-speed CNC press brake, featuring a faster cycle time that significantly increases your output.
- **HIGH ACCURACY & REPEATABILITY** Increase the efficiency of your output with reduced opportunity for material to slip during bending process with improved speeds and with high repeatability reduce rejection.
- **ENERGY SAVING** With more than 70% energy saving in each stroke you get better saving with increased production. Reap the benefits of higher saving in per piece cost.
- **RAPID ACTION BACKGAUGE** Experience enhanced precision and speed with our CNC press brake's rapid-action backgauge. The improved speed and wider backgauge finger catch ensure superior precision in every bend.
- **BRIGHTER ILLUMINATION** Improving visibility, safety and quality with every bend made resulting better output.
- **SILENT OPERATION** With reduced noise level by - 10 db and minimal vibrations, experience comfort and easy of operation - less stress for operator & maintenance.

Technical Specifications

HAWK								
TYPE	CAPACITY KN	POWER KW	NO OF CYLINDER	STROKE LENGTH ADJUSTMENT mm/sec	LOWERING SPEED mm/sec	PRESSING SPEED mm/sec	RETURN SPEED mm/sec	MAX WORKING LENGTH mm
80-25	800	11	2	150	170	17	130	2550
110-31	1100	11	2	250	170	16	140	3100
150-31	1500	15	2	250	200	15	170	3100
200-31	2000	22	2	275	170	15	160	3100

BACKGAUGE SPEED		
1	X AXIS	450 mm/SEC
2	R AXIS	100 mm/SEC
3	Z1,Z2	800mm/SEC

BACKGAUGE ACCURACY		
1	X AXIS	± 0.1 mm
2	R AXIS	± 0.2 mm
3	Z1,Z2	± 1 mm



Fiessler Safety System for operator safety



Wide backgauge fingers on dual LM guide provide stability and precise positioning for accuracy



CNC/NC HYDRAULIC SHEARING MACHINE

Key Features

- Rapid blade gap adjustment
- Low maintenance-compact and reliable hydraulic system
- Cutting line illumination
- Very accurate NC Backgauge system with accuracy of ± 0.1 mm
- Adjustable stroke length
- Hydraulic clamps interlocked with cutter beam
- Fine adjustment of blades with blade fixtures
- Burr-free & distortion free shear results
- Shearing accuracy results better than DIN Standards
- Swing away backgauge feature
- Experience of over 1000 supplies

Standard Scope of Supply

- Set of shear blades mounted on the machine
- NC controller Schneider touch
- NC backgauge 10-1000 mm on hardened & rolled dual lead screw.
- See through finger guard
- Shadow line facility
- Rapid blade gap adjustment
- Foot pedal unit
- Stroke length control
- Squaring arm 1 no.
- Complete machine with hydraulic and electrical safeties
- One set of operational & maintenance manual

Optional Accessories

- Electrical blade clearance
- Ball screw backgauge with AC servo drive
- Support arm
- Handling rollers
- Synthetic cups
- Tumbler stops
- Angle indicator
- Material handling options
- Pneumatic sheet support systems
- Sheet support cum stacking system
- CE Marking

Schneider Controller

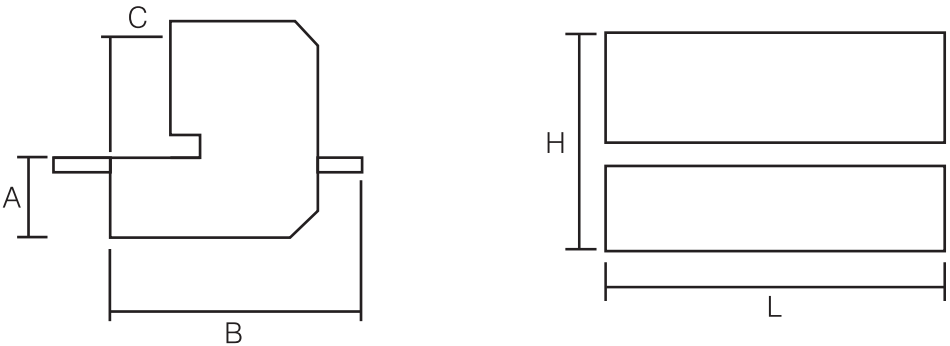
NC Touch Screen Controller Schneider Make as per following features :-

- Backlit LED Colour TFT LCD
- Display size 5.7 inch
- Pixel resolution 320 x 240 pixels QVGA
- Backgauge control programming
- Stroke length limitation
- Stroke counter
- Panel based housing



Capacity		Type	Cutting Capacity		Free Passage in mm	Gaps Standard in mm	No. of hold downs. Cylinders	Total clamping force hold down in Tons	Free Passage hold down\table in mm without cups	Free Passage hold down\table in mm with cups	Cutting Angle	Power		No. of stroke per min	Backgauge		Dimensions				
Thickness in mm	Blade Length in mm		Steel 45 Kg. Per mm ²	St. Steel 70 Kg. Per mm ²								H.P.	K.W.		Range in mm	Indication in mm	L	B	H	A	C
6	3100	3106	6	4	3250	100	15	11.5	12	17	1 deg. 30	15	11	18	10-1000	0.1	3800	2300	1800	800	500
6	4100	4106	6	4	4200	100	21	50	12	17	1 deg. 30	30	22	15	10-1000	0.1	4600	2200	1950	810	500
8	3100	3108	8	5	3250	100	14	33	12	17	1 deg. 30	20	15	15	10-1000	0.1	3700	2400	2100	800	500
8	4100	4108	8	5	4200	100	21	50	12	15	1 deg. 30	30	22	15	10-1000	0.1	4600	2200	1950	810	500
10	3100	3110	10	7	3250	100	14	33	15	20	1 deg. 30	20	15	11	10-1000	0.1	3700	2400	2100	800	500
10	4100	4110	10	7	4200	100	20	60	15	20	1 deg. 30	30	22	13	10-1000	0.1	4600	2250	1950	810	500
13	3100	3113	13	8	3250	100	15	88	25	30	2 deg.	30	22	14	10-1000	0.1	3700	2250	2050	815	500
13	4100	4113	13	8	4200	100	20	116	20	25	2 deg.	30	22	13	10-1000	0.1	4600	2250	2100	880	500
16	3100	3116	16	10	3250	100	15	88	25	30	2 deg.	30	22	9	10-1000	0.1	3700	2250	2050	815	500
16	4100	4116	16	10	4200	100	20	116	20	25	2 deg.	30	22	8	10-1000	0.1	4600	2250	2100	880	500
20	3100	3120	20	12	3250	100	15	127	30	35	2 deg. 30	40	30	7	10-1000	0.1	3900	2500	2150	910	500
25	3100	3125	25	16	3250	100	15	130	30	35	3 deg.	40	30	7	10-1000	0.1	3900	2500	2150	910	500
10	5100	5110	10	5	5250	100	26	63	15	20	1 deg. 30	30	22	8	10-1000	0.1	5600	2350	2430	910	470
10	6300	6310	10	4	6435	100	32	72	15	20	1 deg. 30	30	22	4	10-1000	0.1	6350	2350	2500	900	500

Specifications may change due to technical alterations / upgradations





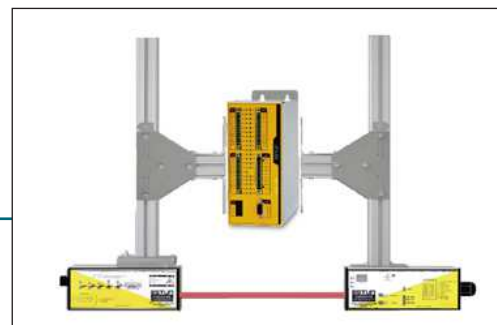
Hydraulic Sheet Follower System

- For bending long and heavy sheet with more comfort and safety bending.
- It increase efficiently production operator need not use more power lift the sheets.



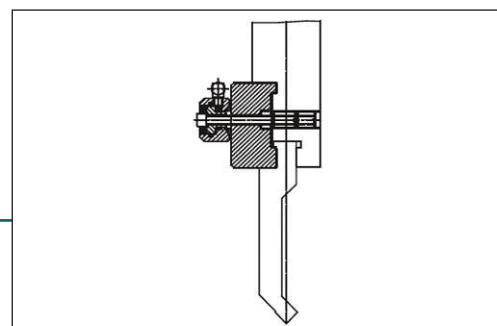
Laser Based Angle Measuring System

- Automatically measurement of angle without taking jobs out of machine for actual correction measurement.
- Save the production time by measuring quickly and accurate angle



Laser Safe IRIS Angle Measurement System

- Provide ultimate safety to operator for bending jobs very close to punch and die.



Hydraulic Tool Clamping

- It ensure quick and fast clamping of tooling.
- Clamp the tool with more rigidity powerfully.



Our spares and subsystem support is probably the fastest in the industry. With close to 95% our Original spares and subsystems available at all times. Rest assured that your requirements will always be met. Spare for upto 40 years old machines are also available.

- Very less down time.
- All orders are processed centrally and the spare parts are dispatched from head office. We use the global logistics network for the fastest possible shipment and shortest transport routes.
- Over 5 crore of items in stock.
- Availability rate of over 95 %
- More than 275,000 different items in stock
- Original spare parts straight from the manufacturer
- Spare parts for older machines manufactured in 1970 are also available
- Order through 24/7 Service Hotline
- Faster response, delivery, and replacement
- In-house production of max. spares
- Spare parts are guaranteed against any manufacturing defect.
- Easy availability of spares of all running models thus reducing inventory of the buyer.
- GST benefit available .
- PAN India common price policy.

CSR (Giving Back to Society)



सत्यमेव जयते
Prime Minister
National Relief Fund



RUDSET INSTITUTE is Rural development and self employment training center.



KHETI VIRASAT MISSION TRUST To take up projects for promotion of sustainable & ecological agricultural practices & providing training for the same.



APAAR To provide skill development for intellectually disabled adults.



MANTRA SOCIAL SERVICES Upliftment of under privileged children, advancement of education and healthcare for them.



MANAV SEHYOG SOCIETY®
Service to Humanity

MANAV SEHYOG SOCIETY REGD. To help the poor and needy in fields of health & education.



THE ARJAN VIR FOUNDATION
Creation of services for patients suffering from blood disorders such as ranging anaemia to leukaemia, marrow donation, bone marrow transplant.



Thank You

Interested in our machines.
Contact us. We respond immediately.

58
YEARS
1965-2023



Hindustan Hydraulics Private Limited
G.T. Road, Suranussi, Jalandhar, Punjab 144027
+91-8725007920, +91-181- 2670054, 2670056
sales@hindustanhydraulics.in, info@hindustanhydraulics.com,
www.hindustanhydraulics.com



Bangalore Office : No. 10, Trust Complex, 2nd Floor,
DVG Road, Basavanagudi, Bangalore – 560004, Tel: 080-26604241
TOLL FREE No. 97188-18897